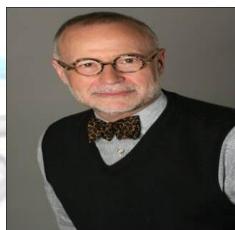


The Work of Play: Developing Self-Regulation in Early Childhood

Please join us for an exciting day with the remarkable expert on play,

Gil Foley Ed.D., IMH-E® IV-C



Friday, July 12, 2019

9:00 a.m.–4:00 p.m.

Carondelet Hospitality Center. 385 Watervliet-Shaker Rd.,

Latham, NY 12110

Lunch Provided

Play is the portal to a vast array of developmental opportunities! In play, children practice regulation in spontaneous, self-directed, holistic and responsive ways.

This day is for YOU! It is devoted to the discovery of play as an invaluable medium for mental health clinicians, educators, parents, child care providers, and therapists from across disciplines.

Dr. Foley will discuss factors that contribute to the development of self-regulatory capacity including: temperament and constitutional factors, cognitive control and executive function, and positive parenting and attachment are reviewed in the context expected acquisition of self-regulatory capacity in early childhood. CEUs Available!

Register Early! Discount if you register by June 15, 2019!

| | |
|-----------------|-------|
| Regular. | \$125 |
| NYS-AIMH Member | \$105 |
| Student Member | \$60 |

After June 15, 2019

| | |
|-----------------|-------|
| Regular | \$135 |
| NYS-AIMH Member | \$115 |
| Student Member | \$65 |

For more information and to register or go to nysaimh.org, and click on *Events*

Questions? Email us at: reachus@nysaimh.org